

- USB\_HOST\_PWREN\_H >> PMIC\_VDC
- GPIO1\_D5\_1V8\_D >> PWR\_KEY\_L
- PWR\_KEY\_L >> PWRON\_L
- PMIC\_EXT\_EN\_OUT >> SARADC\_VIN2\_LCD\_ID1
- BATT\_TC\_L << CHG\_LED
- GPIO3\_D3\_1V8\_D << CHG\_OK\_INT
- GPIO3\_D3\_1V8\_D << GPIO4\_B1\_3V3\_U
- I2C4\_SDA\_M3\_3V3 << I2C4\_SDA\_M3\_3V3
- I2C4\_SCL\_M3\_3V3 << I2C4\_SCL\_M3\_3V3
- BOOT\_CONFIG << DC\_DET
- GPIO1\_C0\_1V8\_U << DC\_DET

**COOL PI**

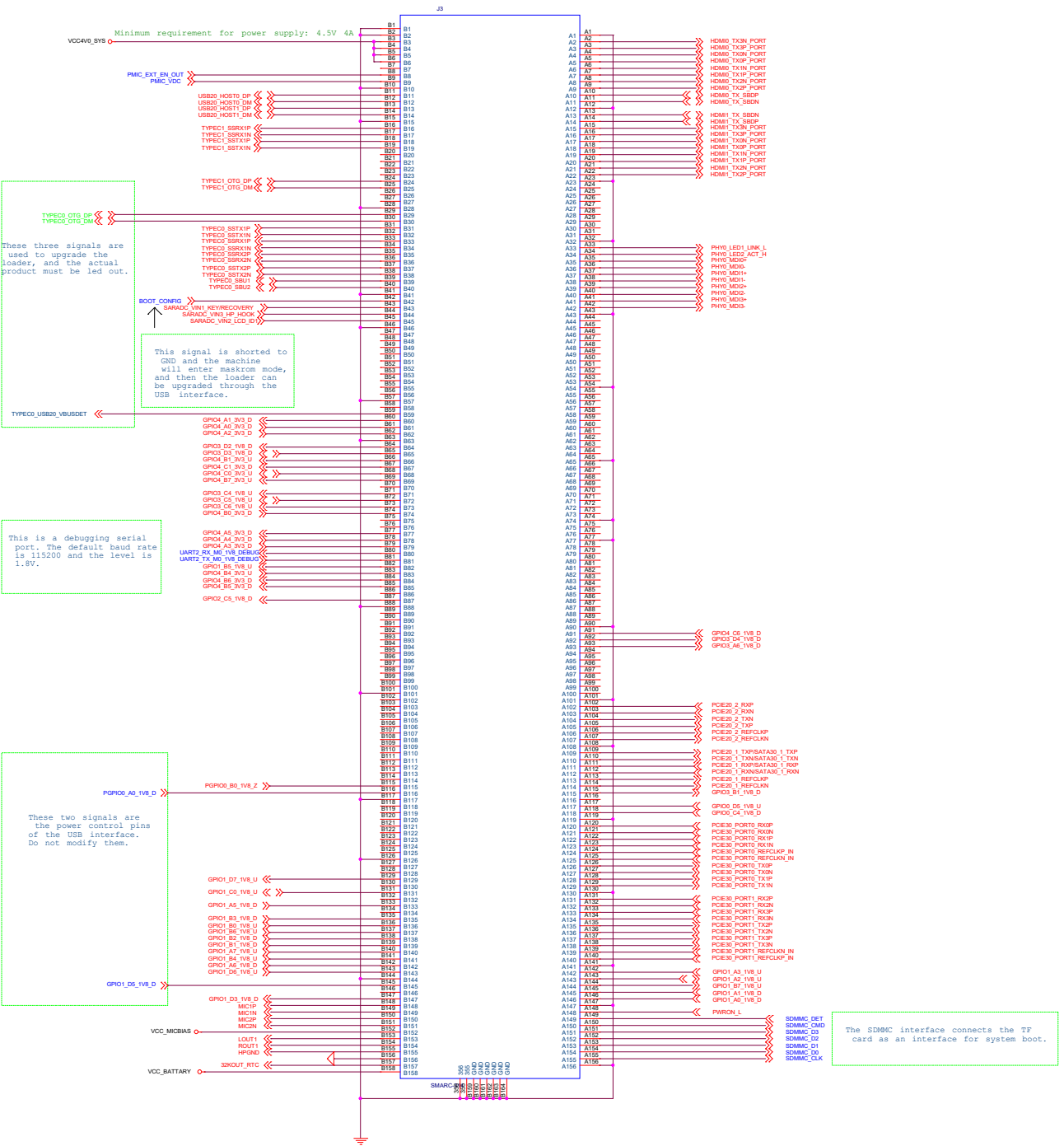
**YANYI**      www.cool-pi.com

**Project:** COOLPI-GENBOOK

**File:** <Page name>

**Date:** Thursday, June 13, 2024      **Rev:** <Revision>

**Designed by:** <designer>      **Reviewed by:** <Checker>      **Sheet:** 1 of 12



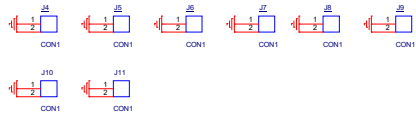
These three signals are used to upgrade the loader, and the actual product must be led out.

This signal is shorted to GND and the machine will enter maskrom mode, and then the loader can be upgraded through the USB interface.

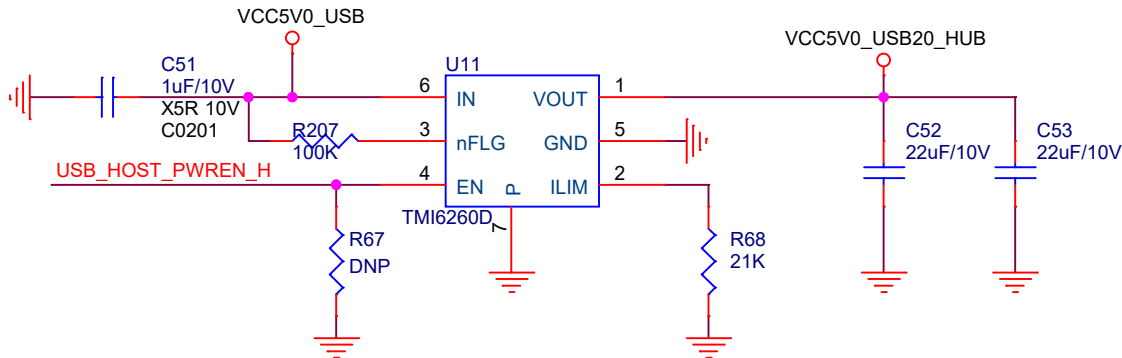
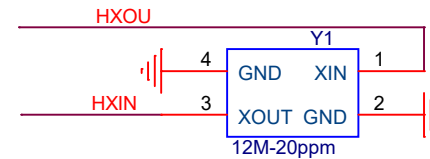
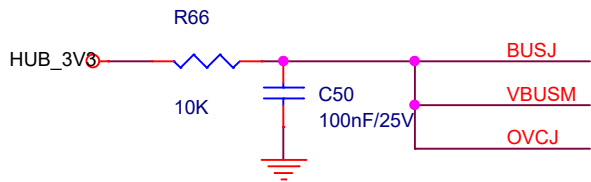
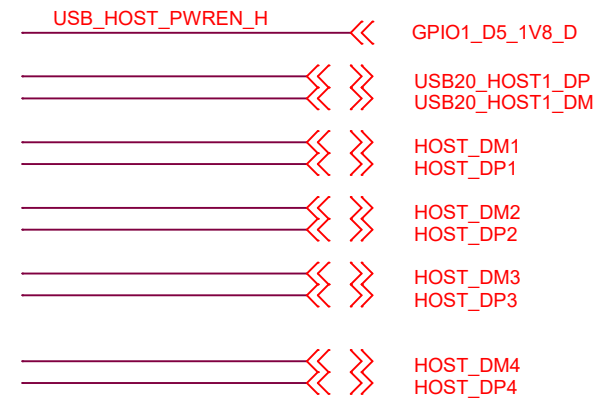
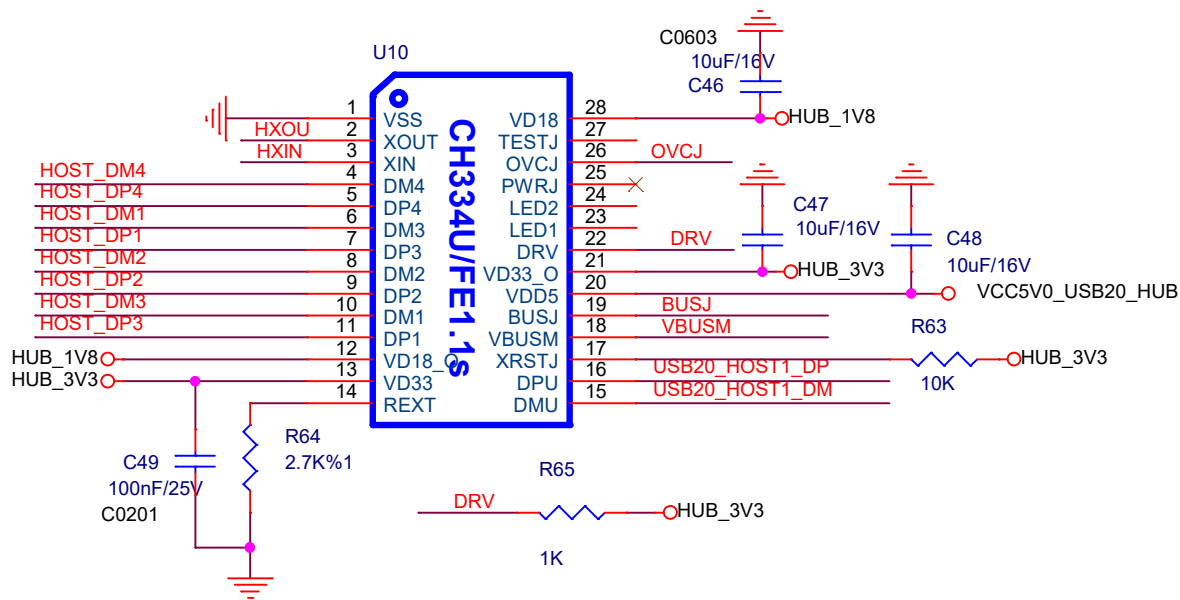
This is a debugging serial port. The default baud rate is 115200 and the level is 1.8V.

These two signals are the power control pins of the USB interface. Do not modify them.

The SDMMC interface connects the TF card as an interface for system boot.



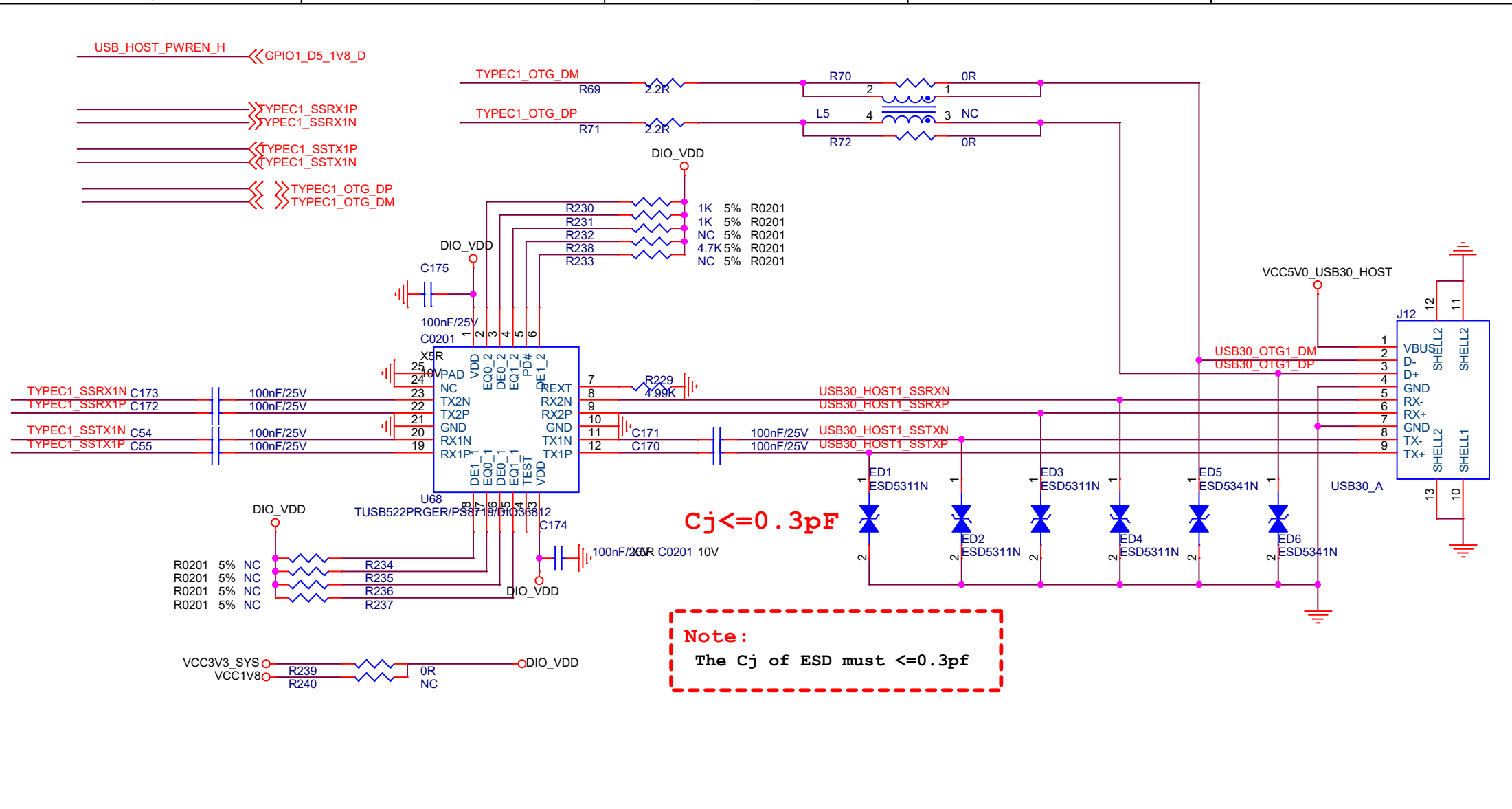
**COOL PI**  
**YANYI** www.cool-pi.com  
 Project: COOLPIGENBOOK  
 File: <Page name>  
 Date: Thursday, June 15, 2023  
 Designed by: <designer> Reviewed by: <checker> Sheet: 2 of 12



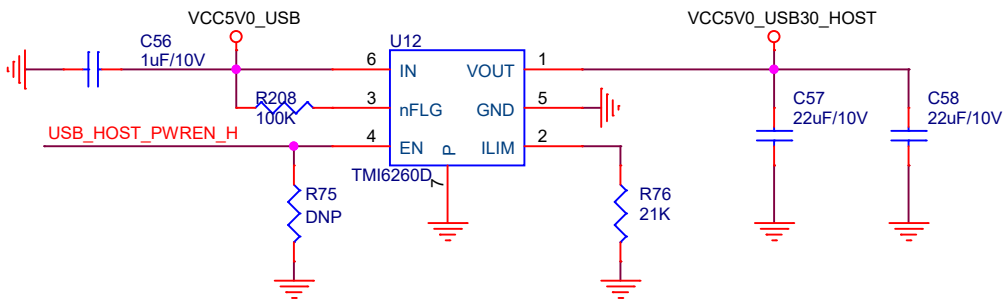
YANYI

www.cool-pi.com

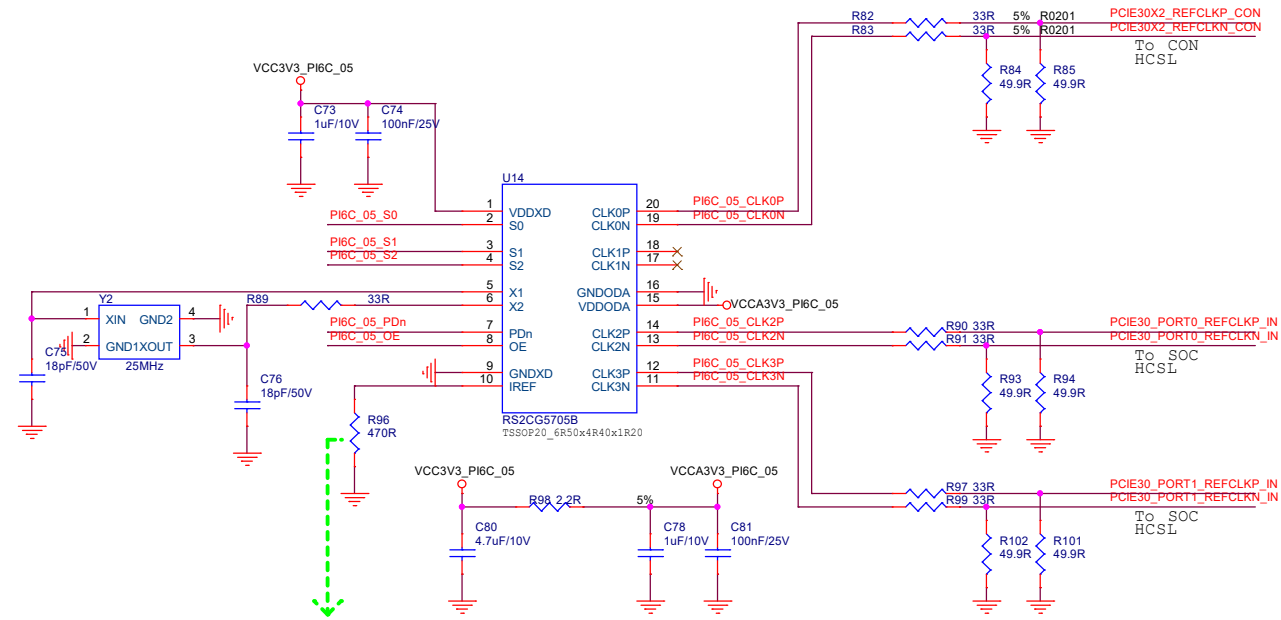
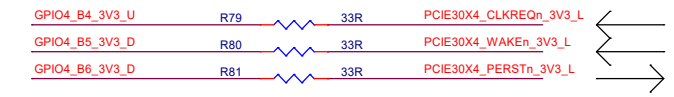
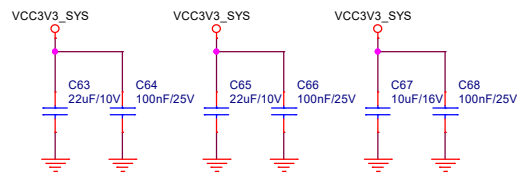
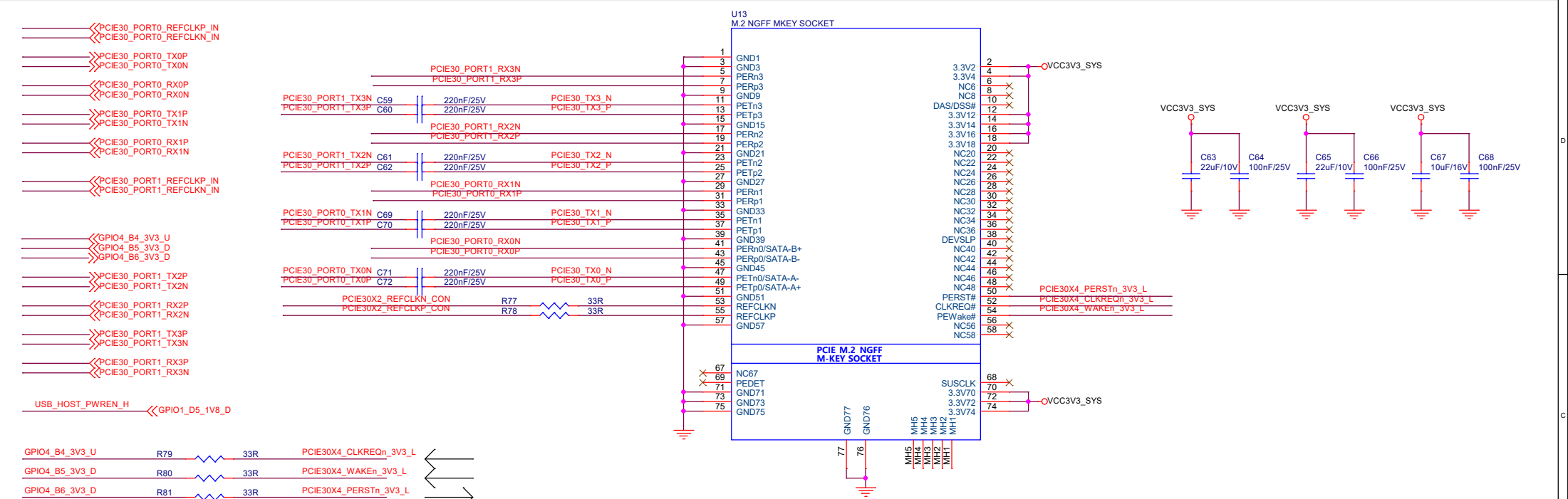
Project:	COOLPI-GENBOOK		
File:	<Page name>		
Date:	Thursday, June 13, 2024	Rev:	<Revision>
Designed by:	<designer>	Reviewed by:	<Checker>
Sheet:	3 of 12		



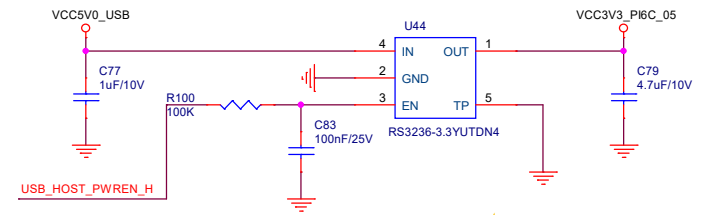
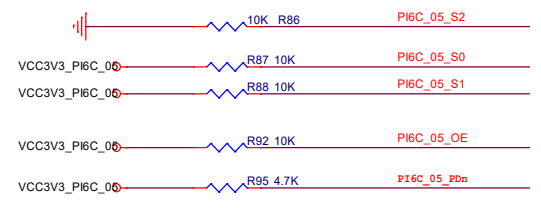
**Note:**  
The Cj of ESD must  $\leq 0.3\text{pF}$



<b>YANYI</b>		<a href="http://www.cool-pi.com">www.cool-pi.com</a>	
<b>Project:</b>	COOLPI-GENBOOK		
<b>File:</b>	<Page name>		
<b>Date:</b>	Thursday, June 13, 2024	<b>Rev:</b>	<Revision>
<b>Designed by:</b>	<designer>	<b>Reviewed by:</b>	<Checker>
		<b>Sheet:</b>	4 of 12



PI6C_S2	PI6C_S1	PI6C_S0	Spread %	Out Freq
0	0	0	-0.5	100MHz
0	0	1	-1.0	100MHz
0	1	0	-1.5	100MHz
0	1	1	No Spread	100MHz



If board target trace impedance is 50ohm then R = 475ohm providing an IREF of 2.32 mA . The output current ( IOH ) is 6 \* IREF . 6x2.32x50=696mV

**COOL PI**

**YANYI** www.cool-pi.com

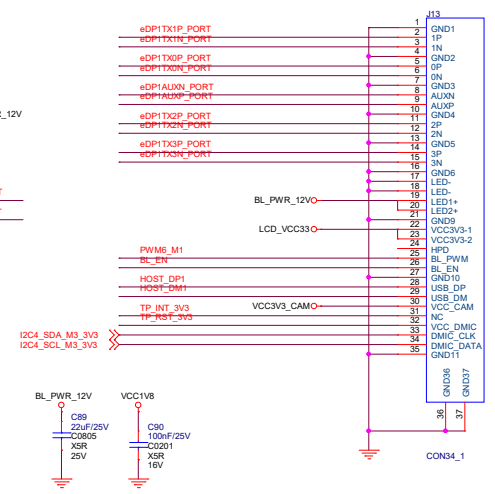
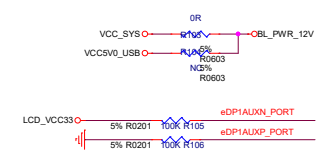
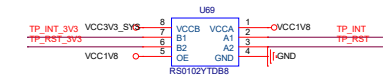
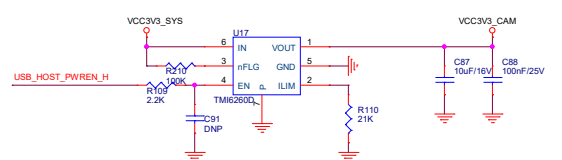
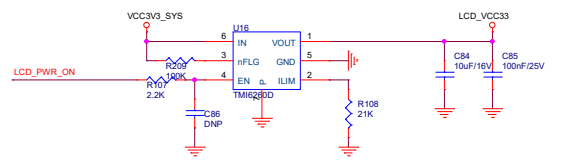
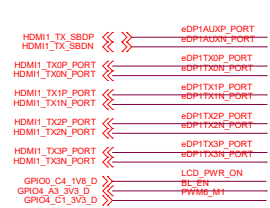
Project: COOLPI-GENBOOK

File: <Page name>

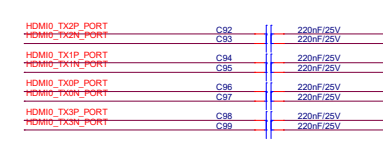
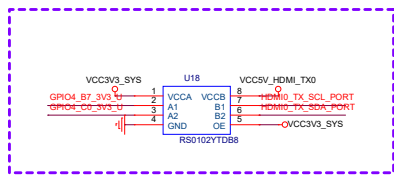
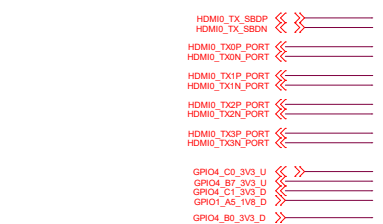
Date: Thursday, June 13, 2024

Designed by: <designer> Reviewed by: <Checker> Sheet: 5 of 12

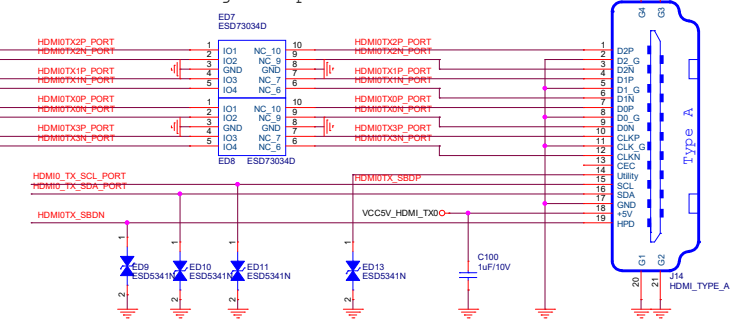
# eDP0



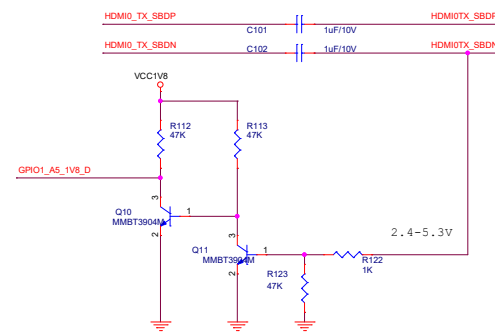
# HDMI TX0



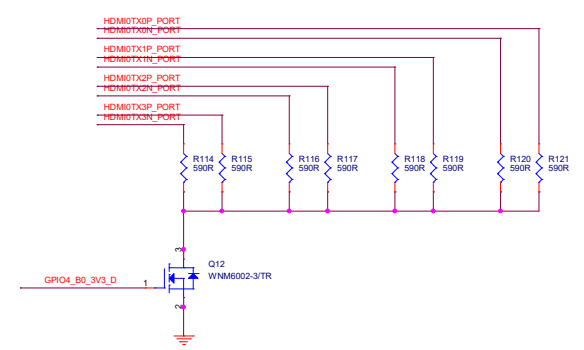
Cj <= 0.2pF



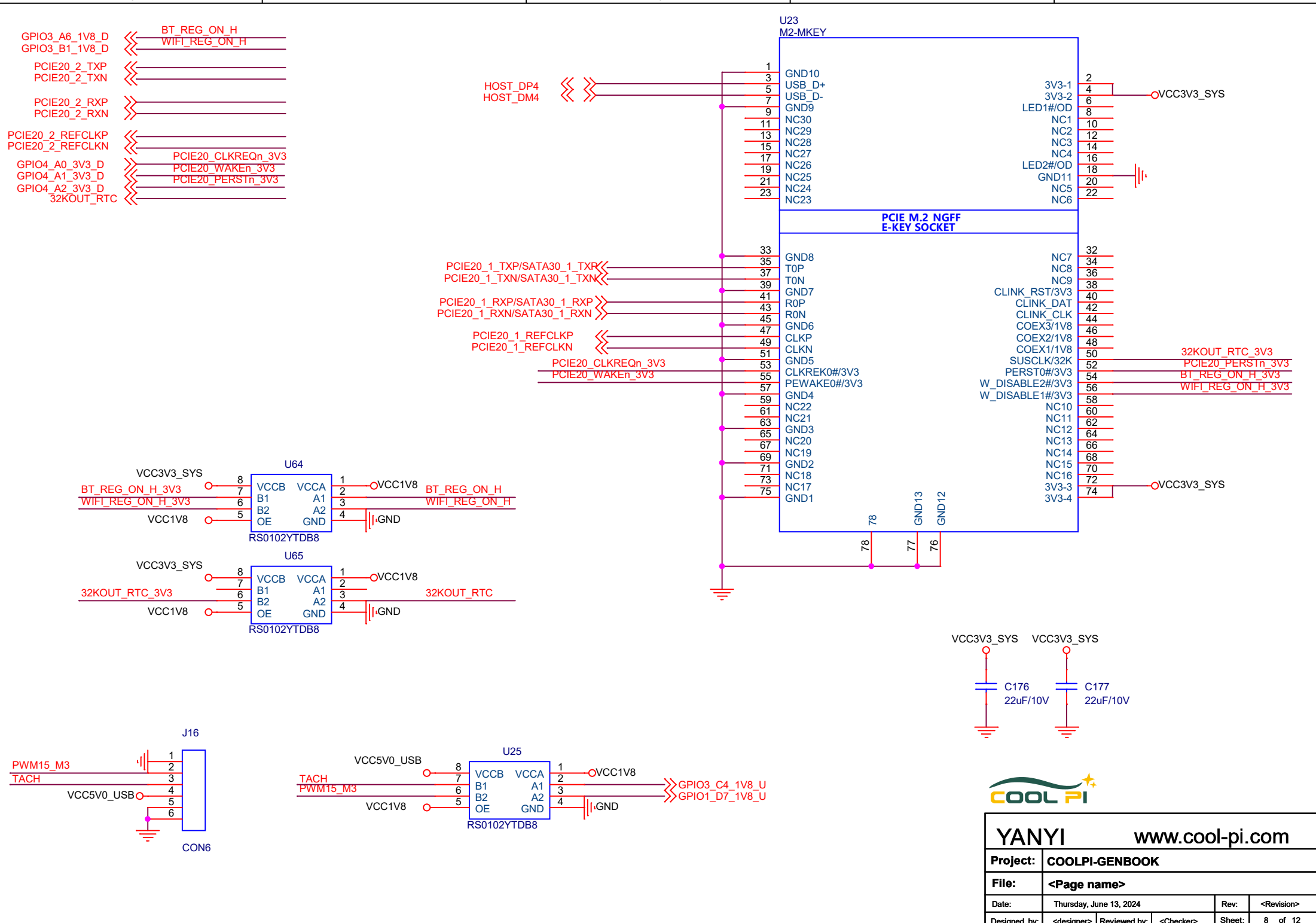
# HDMI TX eARC



# HDMI TX CEC



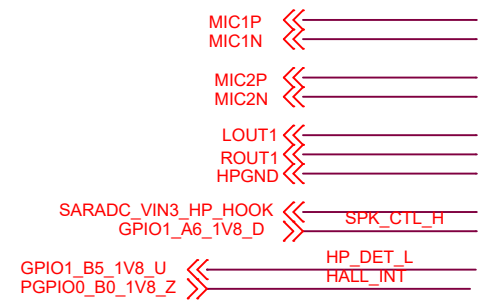
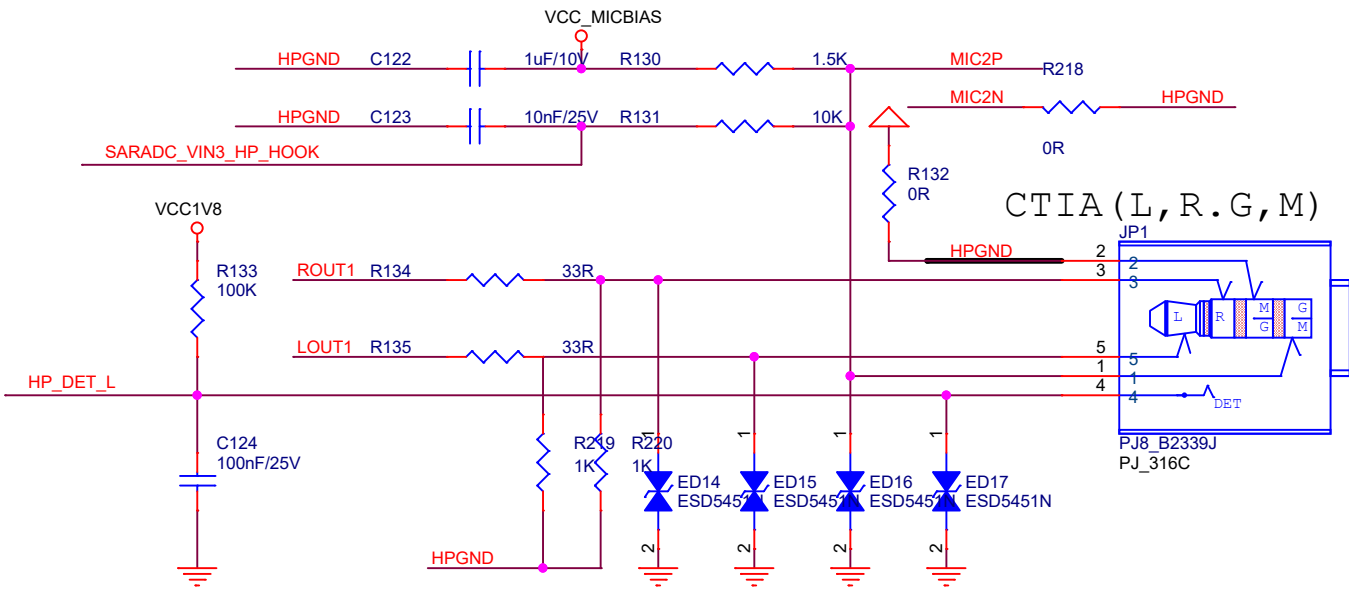
**Note:**  
 HDMI2.0: Stuff R5043, R5044, R5045  
 No stuff Q5010, Q5011, Q5012  
 HDMI2.1: Stuff Q5010, Q5011, Q5012  
 No stuff R5043, R5044, R5045



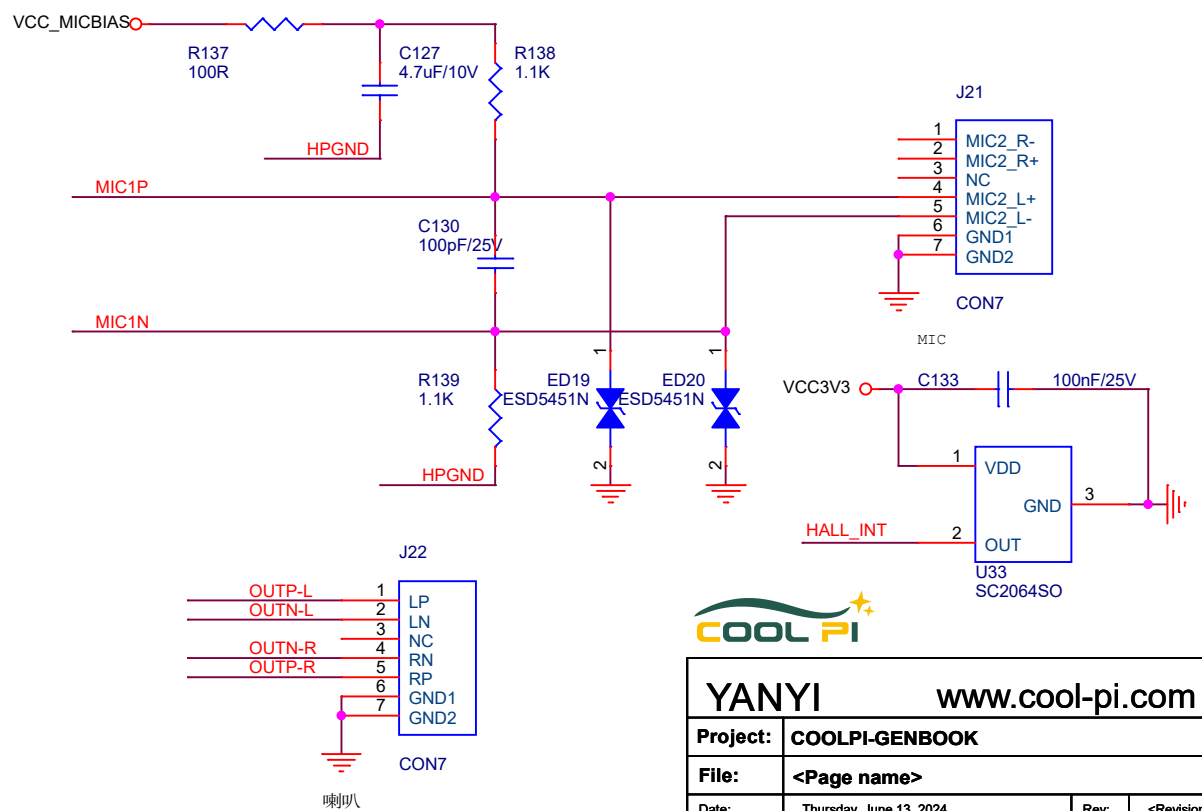
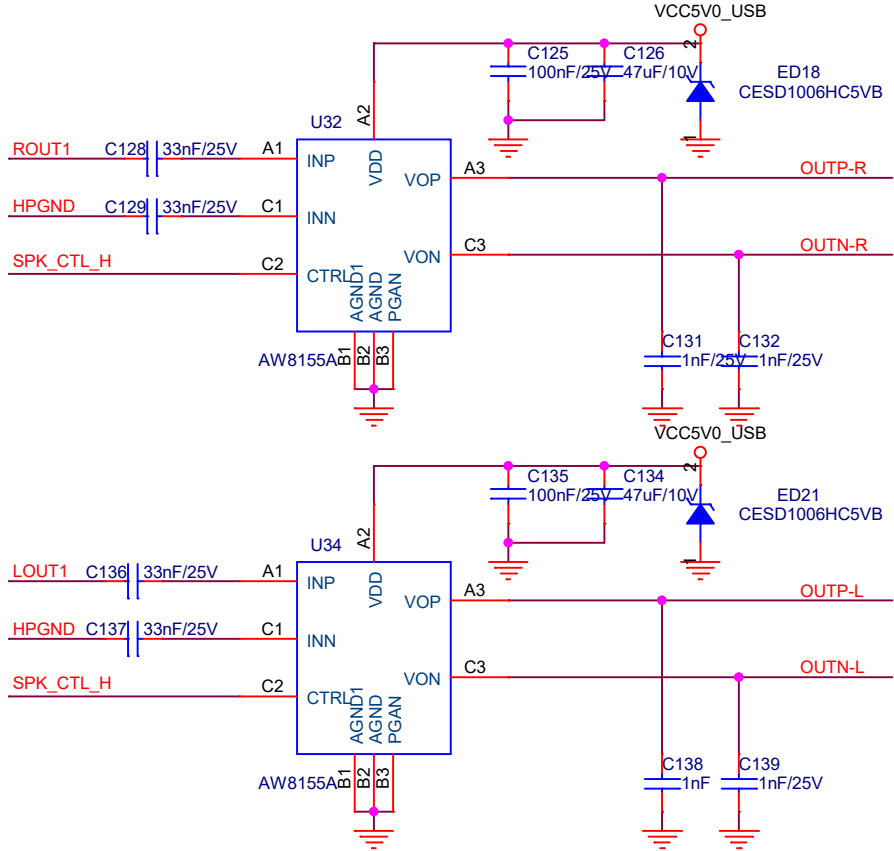
<b>YANYI</b>		<a href="http://www.cool-pi.com">www.cool-pi.com</a>	
<b>Project:</b>	COOLPI-GENBOOK		
<b>File:</b>	<Page name>		
<b>Date:</b>	Thursday, June 13, 2024	<b>Rev:</b>	<Revision>
<b>Designed by:</b>	<designer>	<b>Reviewed by:</b>	<Checker>
		<b>Sheet:</b>	8 of 12







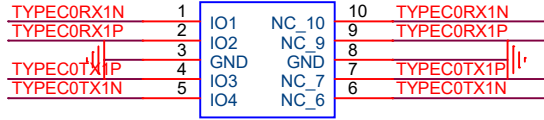
SPEAKER



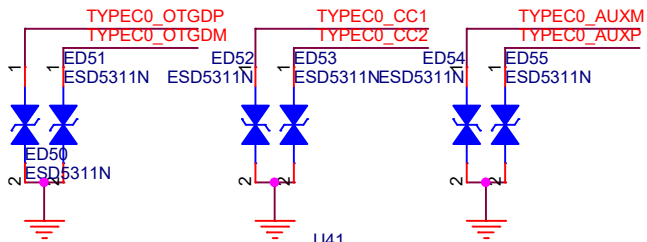
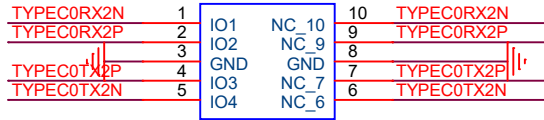
<b>YANYI</b>		<a href="http://www.cool-pi.com">www.cool-pi.com</a>	
<b>Project:</b>	COOLPI-GENBOOK		
<b>File:</b>	<Page name>		
<b>Date:</b>	Thursday, June 13, 2024	<b>Rev:</b>	<Revision>
<b>Designed by:</b>	<designer>	<b>Reviewed by:</b>	<Checker>
		<b>Sheet:</b>	10 of 12

# Type-C PORT

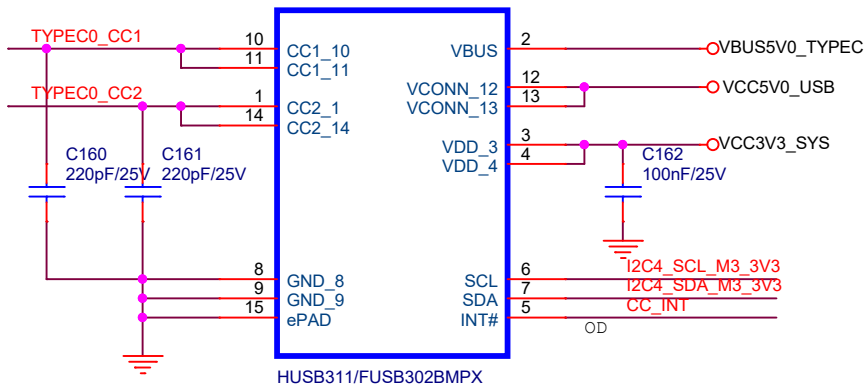
U39  
ESD73034D



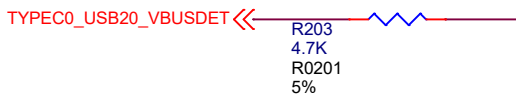
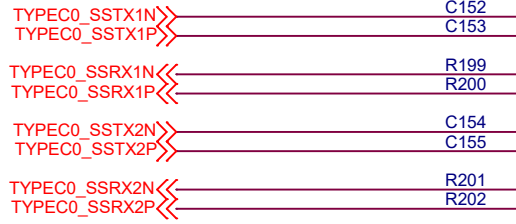
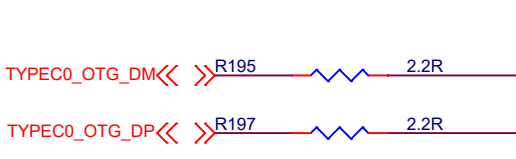
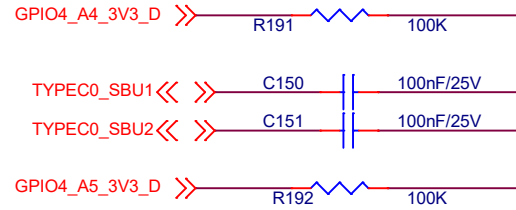
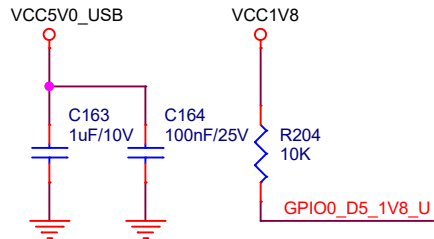
U40  
ESD73034D



U41

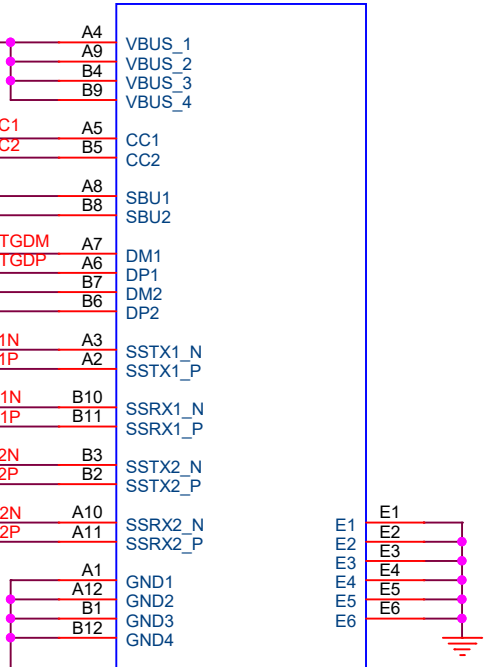


HUSB311/FUSB302BMPX

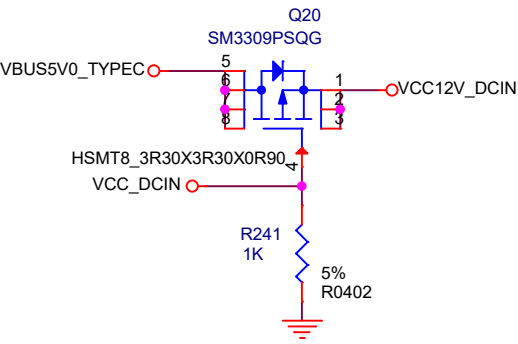
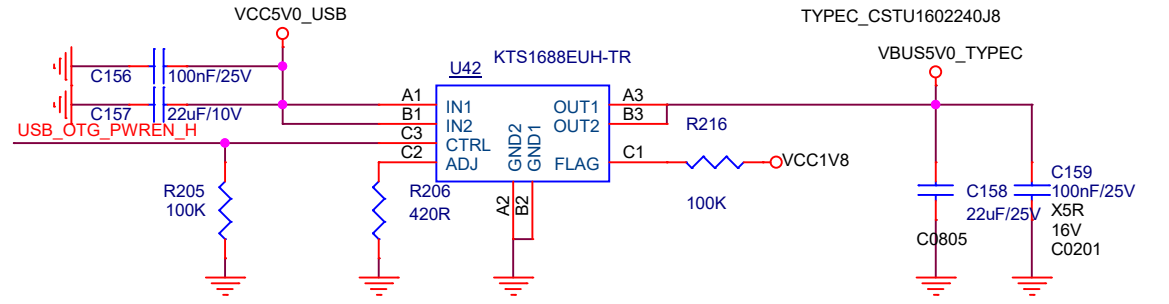


I2C4\_SDA\_M3\_3V3  
I2C4\_SCL\_M3\_3V3  
GPIO0\_D5\_1V8\_U  
PGPIO0\_A0\_1V8\_D

J27

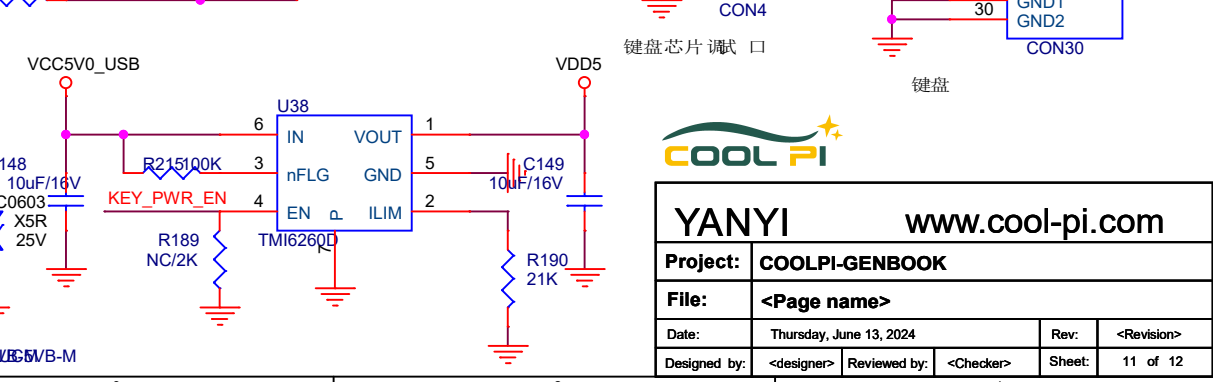
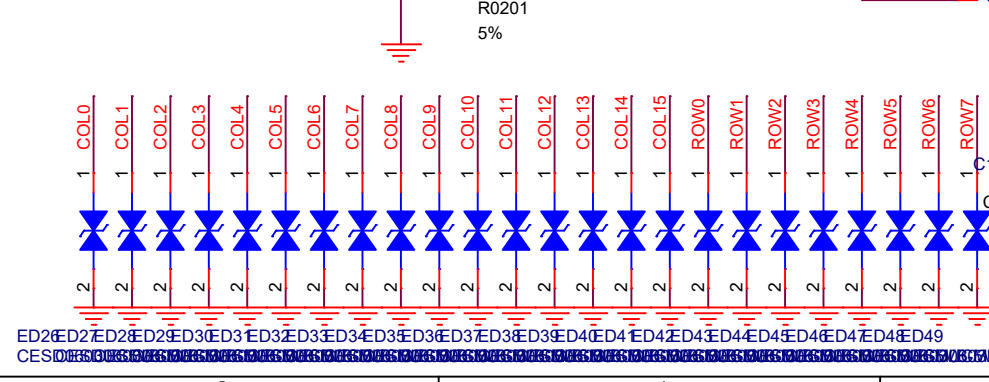
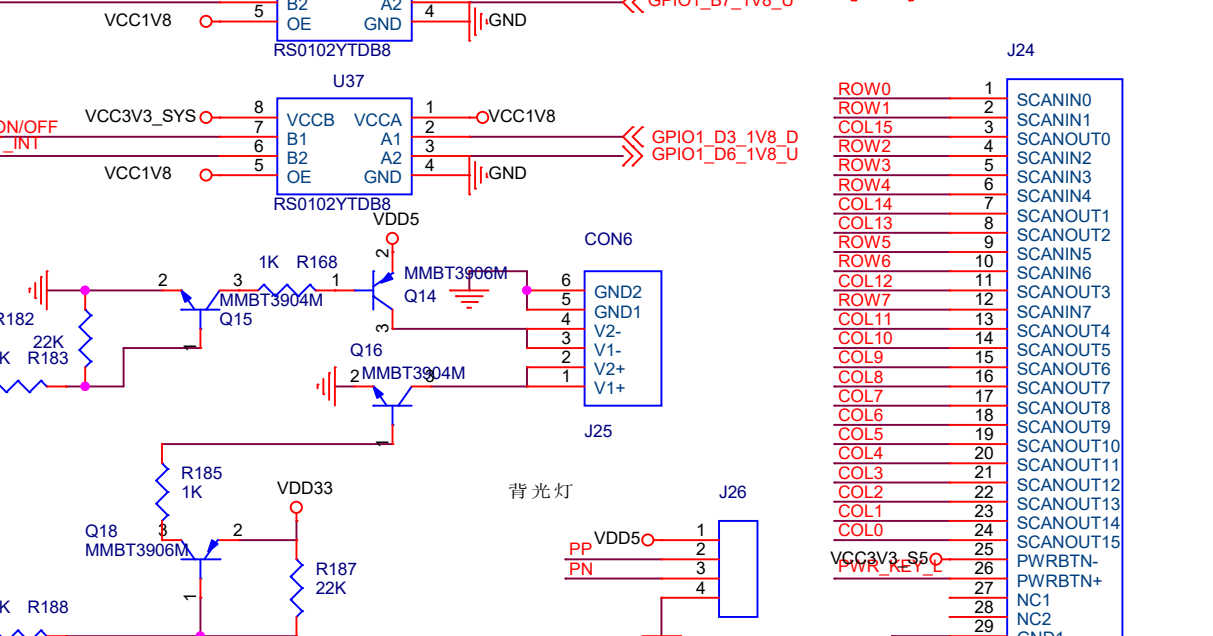
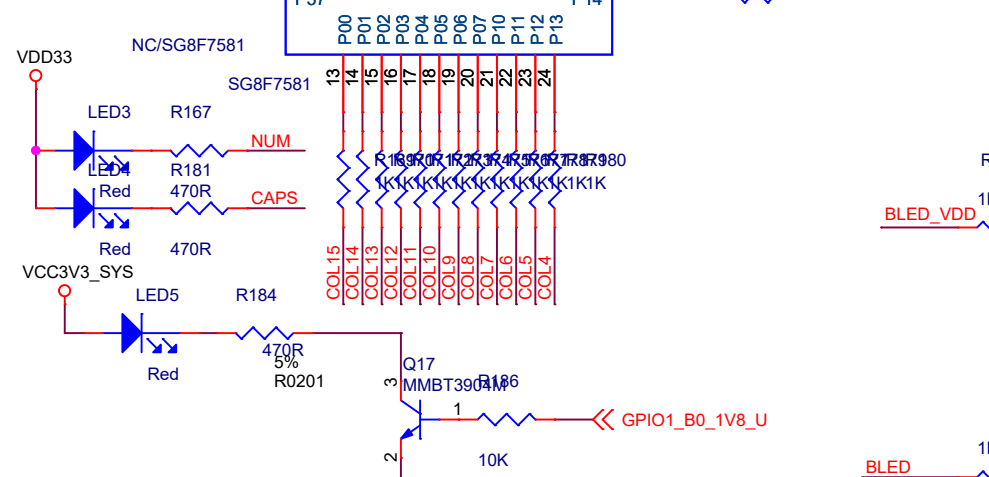
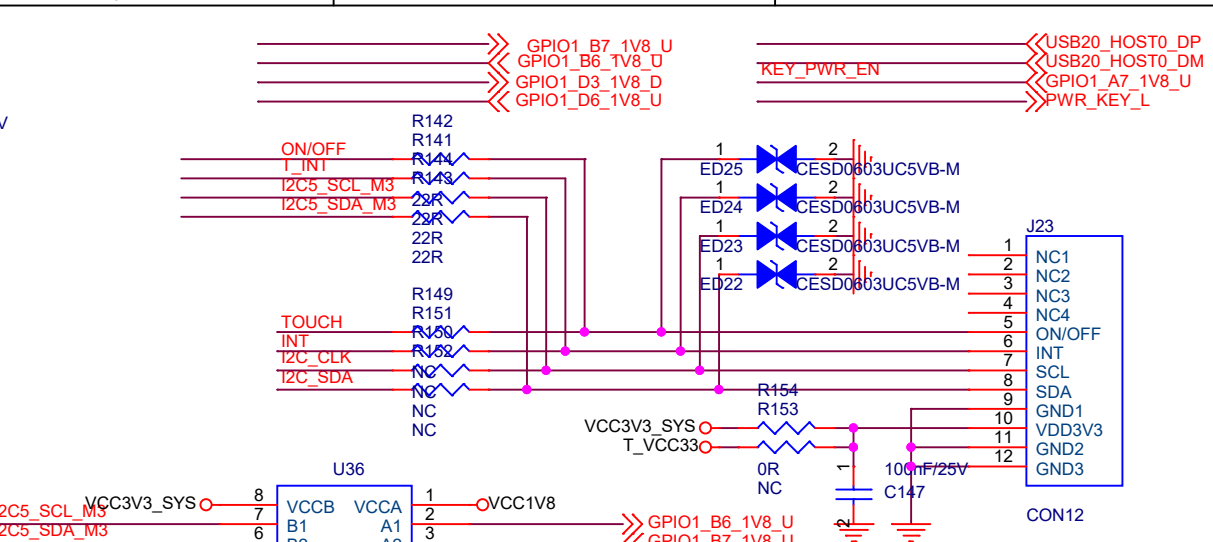
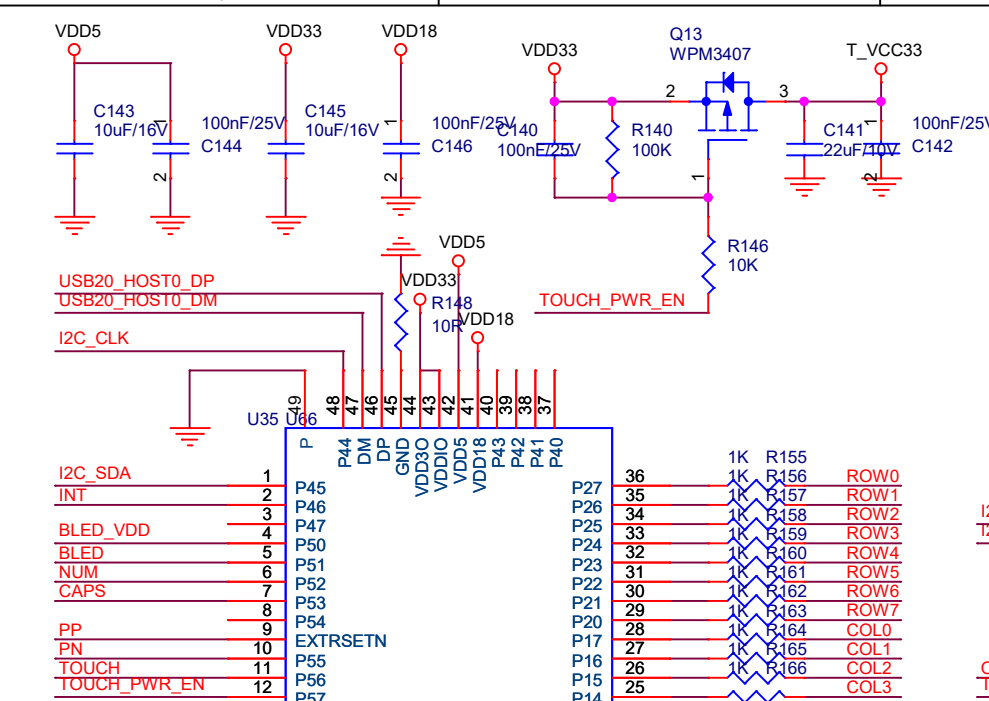


2012670005  
TYPEC\_CSTU1602240J8



**YANYI** [www.cool-pi.com](http://www.cool-pi.com)

Project:	COOLPI-GENBOOK		
File:	<Page name>		
Date:	Thursday, June 13, 2024	Rev:	<Revision>
Designed by:	<designer>	Reviewed by:	<Checker>
		Sheet:	11 of 12



**COOL PI**

**YANYI** www.cool-pi.com

<b>Project:</b>	COOLPI-GENBOOK		
<b>File:</b>	<Page name>		
<b>Date:</b>	Thursday, June 13, 2024	<b>Rev:</b>	<Revision>
<b>Designed by:</b>	<designer>	<b>Reviewed by:</b>	<Checker>
		<b>Sheet:</b>	11 of 12